

Insights Hub

Dashboards




System Manual

05/2025

Legal information

Warning notice system

This manual contains notices you have to observe in order to ensure your personal safety, as well as to prevent damage to property. The notices referring to your personal safety are highlighted in the manual by a safety alert symbol, notices referring only to property damage have no safety alert symbol. These notices shown below are graded according to the degree of danger.

 DANGER
indicates that death or severe personal injury will result if proper precautions are not taken.
 WARNING
indicates that death or severe personal injury may result if proper precautions are not taken.
 CAUTION
indicates that minor personal injury can result if proper precautions are not taken.
NOTICE
indicates that property damage can result if proper precautions are not taken.


If more than one degree of danger is present, the warning notice representing the highest degree of danger will be used. A notice warning of injury to persons with a safety alert symbol may also include a warning relating to property damage.

Qualified Personnel

The product/system described in this documentation may be operated only by **personnel qualified** for the specific task in accordance with the relevant documentation, in particular its warning notices and safety instructions. Qualified personnel are those who, based on their training and experience, are capable of identifying risks and avoiding potential hazards when working with these products/systems.

Proper use of Siemens products

Note the following:

 WARNING
Siemens products may only be used for the applications described in the catalog and in the relevant technical documentation. If products and components from other manufacturers are used, these must be recommended or approved by Siemens. Proper transport, storage, installation, assembly, commissioning, operation and maintenance are required to ensure that the products operate safely and without any problems. The permissible ambient conditions must be complied with. The information in the relevant documentation must be observed.

Trademarks

All names identified by ® are registered trademarks of Siemens AG. The remaining trademarks in this publication may be trademarks whose use by third parties for their own purposes could violate the rights of the owner.

Disclaimer of Liability

We have reviewed the contents of this publication to ensure consistency with the hardware and software described. Since variance cannot be precluded entirely, we cannot guarantee full consistency. However, the information in this publication is reviewed regularly and any necessary corrections are included in subsequent editions.

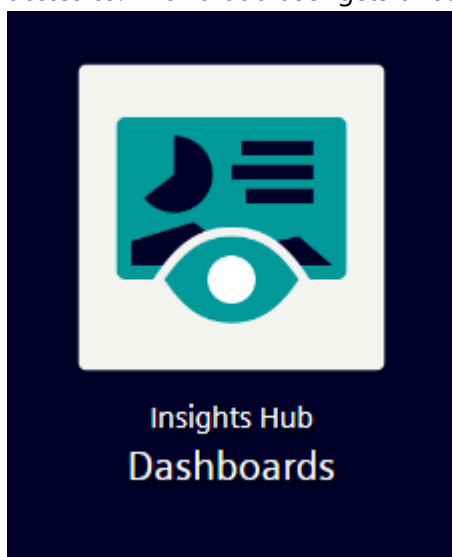
Table of contents

1. Introduction..... 4

Introduction

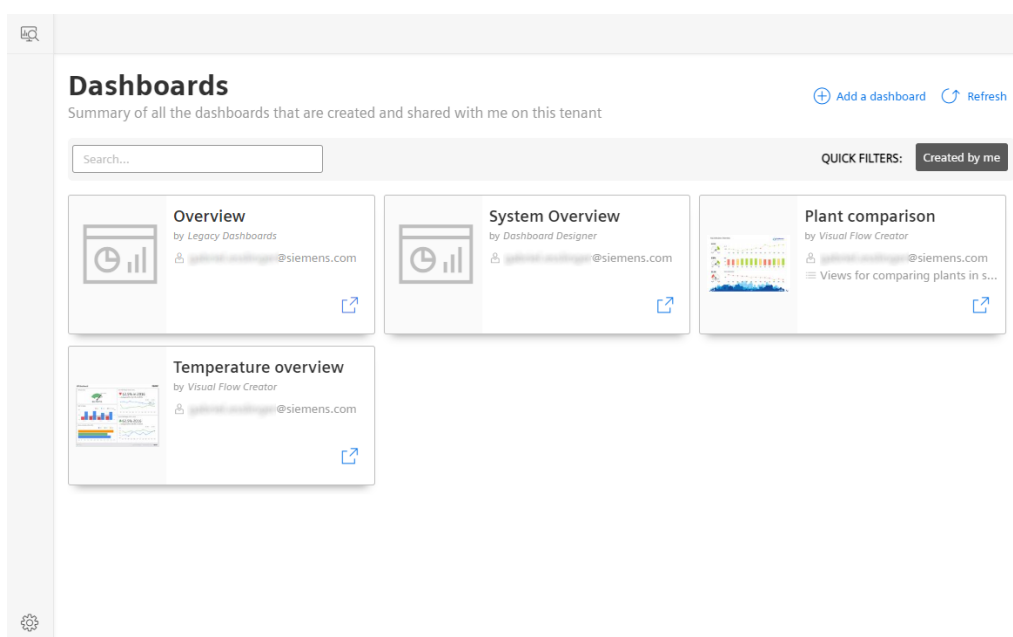
Introduction

Dashboards is a simple application that displays all dashboards in Insights Hub that a user has access to. With that a user gets direct access to his dashboards directly from the launchpad.



User Interface

Dashboards overview

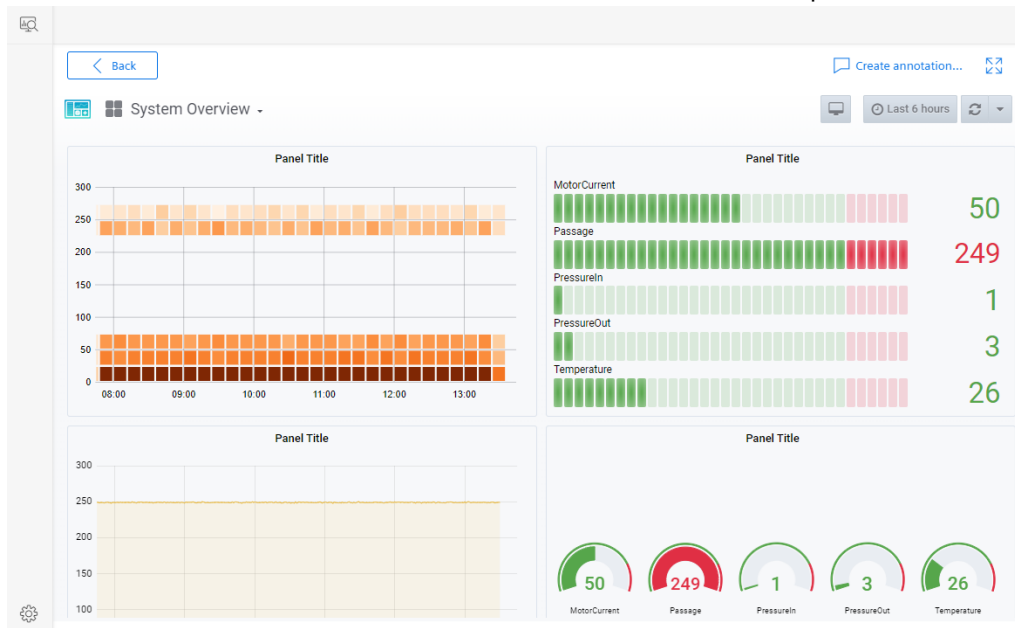


The dashboard overview provides the following features.

- card view of available dashboards
- quickfilter Created by me to see only the own dashboards
- search to find the right dashboard. Also dashboard types can be searched like dashboards from Insights Hub Business Intelligence
- Dashboards can be opened in the application itself (click on a dashboard card) or in a separate browser tab

Dashboards viewer

If a user selects a dashboard in the overview, the dashboard will open.

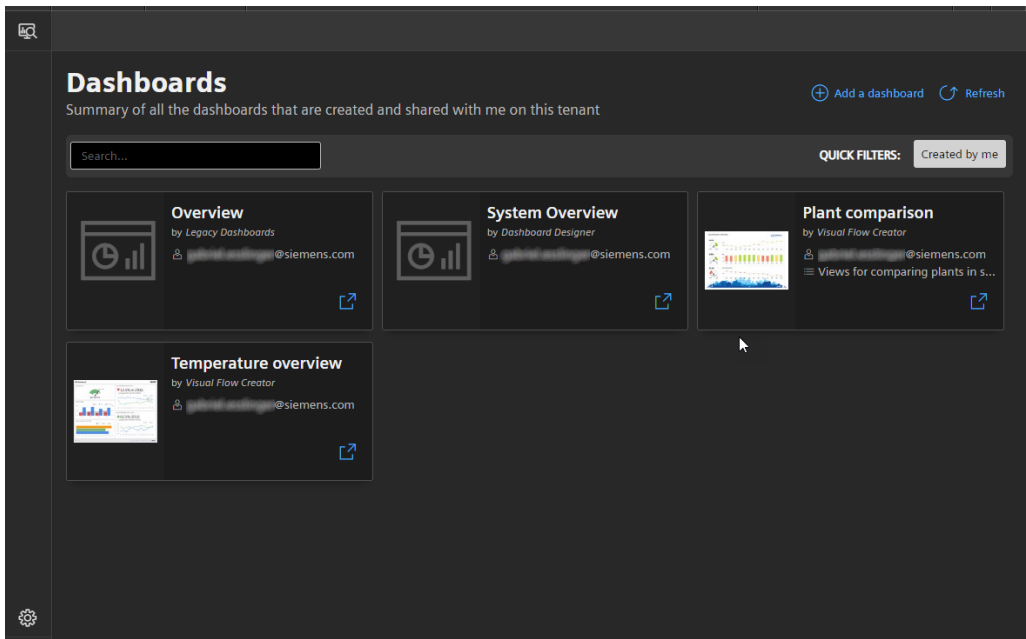


In the dashboards viewer, the user can use the fullscreen mode or create annotations if he detects something special.

Dashboards settings

The screenshot shows the 'Settings' page for dashboards. The page is titled 'Settings' and has a subtitle 'Configure Dashboards for your specific needs.' It is divided into two sections: 'Appearance' and 'Info'. The 'Appearance' section allows users to choose a theme (Default) and a language (English (default)). The 'Info' section displays details about the current user, tenant name, and environment, along with buttons to 'Prepare E-Mail' and 'Copy'.

In dashboard settings the user can select the preferred theme. Furthermore information about the user and environment can be used for support mails.



User rights

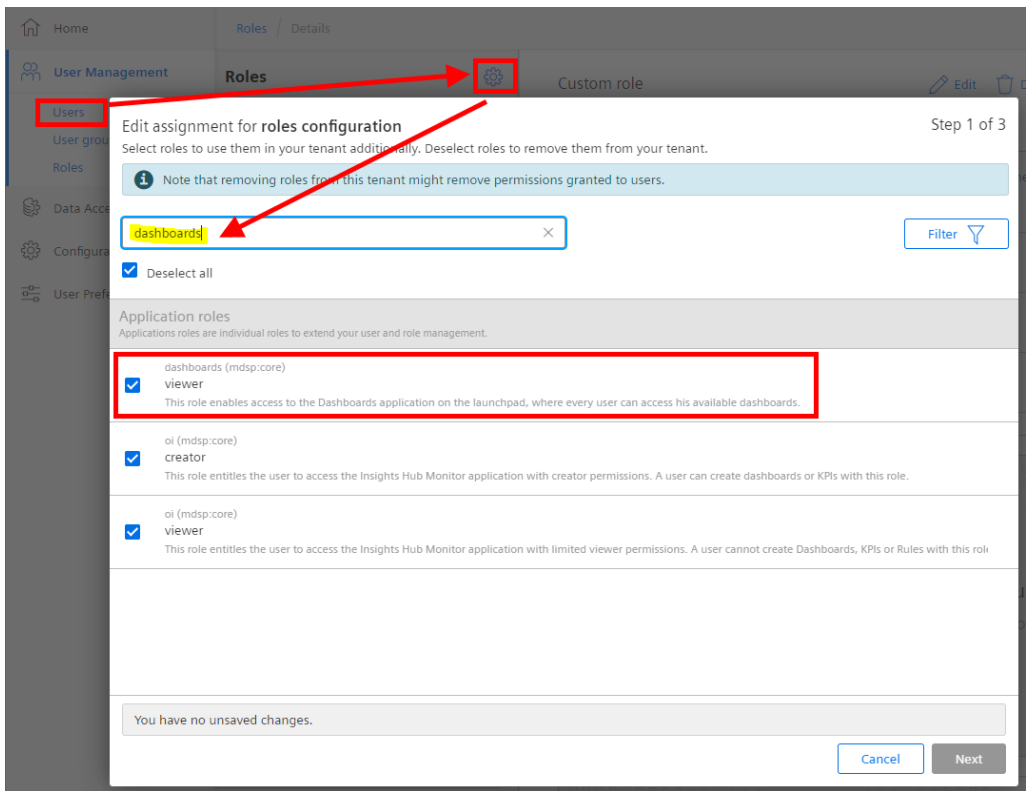
The application is available with the role

- `mdsp:core:dashboards.viewer`

The role can be assigned to the user in the Settings application. If this application is not visible on the Launchpad, ask the administrator of your tenant.

Note:

If the role `mdsp:core:dashboards.viewer` is not available, the role has to be assigned to the tenant.



For creating dashboards the following role is required:

- `mdsp:core:oi.creator`

Otherwise the Create Dashboard button is not visible.

Supported dashboard types

The application supports different sources of dashboards:

- Insights Hub Monitor
- Dashboard Designer
- Visual Flow Creator
- Insights Hub Business Intelligence
- Legacy dashboards (created with an earlier version of Insights Hub Monitor)

Depending on the assigned roles, the dashboard application queries for related dashboards. So if a user does not have access right for Visual Flow Creator, it will not query and show dashboards of this type.

You can open the dashboards inside the application or in a separate browser tab.

Further information

- [Dashboard Designer](#)
- [Insights Hub Business Intelligence](#)
- [Visual Flow Creator](#)
- [Insights Hub Monitor Dashboards](#)